

Shun Lee Catholic Secondary School

Annual School Profile

2017/2018

Contents

	<u>Page</u>
School Background	1
School Mission	1
School-based Educational Goals	2
Major Concerns 2017-2018	5
Main Focuses of the year	5
Academic Committee	5
Extra-curricular Activities Committee	5
Students Affairs Committee	5
Professional Development Committee	5
Spiritual Life Development Committee	5
General Affairs Committee	6
IT Committee	6
Student Profile	7
Teacher Profile	9
Class Structure	10
Programme Structure	11
Programme Arrangement	12
Extra-curricular Activities	13
Our School Premises	14
Classrooms and Special Rooms	14
Special Features	14

1. School Background

Shun Lee Catholic Secondary School is an aided co-educational secondary school founded in 1982 by the Hong Kong Catholic Diocese, which has a mission for her schools to promote the formation of the whole person. The school motto SIC DEO PLACET “悅樂主心” reflects our commitment to realize this mission of the sponsoring body.

The school works in accordance with the school mission and dedicates to cultivating the core values of “**Love**”, “**Mutual Respect**” and “**Responsibility**” in students.

The school supervisor is Rev. Pierre J. Devos, and Miss Chim Yin Chu is the Principal. Our teaching staff consists of 57 members. In addition, we have 16 non-teaching staff members and 9 janitors.

2. School Mission

The school is dedicated to providing a positive learning environment in which students understand the truth of the Gospel and experience the love of Christ. It is where students learn to integrate Christian faith with Chinese culture and life for holistic personal development.

We believe that students are unique individuals possessing distinctive gifts and talents. We thus commit ourselves to helping students develop their potential to the fullest and become independent learners capable of mastering self-learning skills, with emphasis on fostering positive attitudes towards life.

We devote ourselves to educating students to become responsible citizens who are eager and competent to make contributions to society, and to encourage them to carry on the best of Chinese culture.

3. School-based Educational Goals

3.1 Student achievements

- 3.1.1 Instill in students a positive outlook on life based on the teaching and values of Christ.
- 3.1.2 Nurture students into responsible, competent and committed local and global citizens.
- 3.1.3 Equip students with the knowledge and skills required to meet the challenges of the 21st century and to become life-long learners.
- 3.1.4 Develop students into independent learners with competence in analysis, problem solving, making judgement and decision.
- 3.1.5 Develop students into individuals with high self-esteem and strong leadership.
- 3.1.6 Develop the individual potential of students and foster a spirit of cooperation and service.
- 3.1.7 Develop students' abilities in using English and Chinese for learning and communication.
- 3.1.8 Help students master skills for enhancing physical endurance and increased physical adaptability.
- 3.1.9 Help students cultivate an interest in art and develop their imagination and creativity.
- 3.1.10 Guide students to understand the strengths and weaknesses of Chinese culture and help them appreciate the best of its traditions and values.

3.2 Learning Experience

- 3.2.1 Provide religious activities for students to experience the joy and peace of being a Christian and learn to respect other religions.
- 3.2.2 Cultivate in students a sense of self-motivation, self-evaluation, self-respect and self-discipline through a system of rewards and admonition.
- 3.2.3 Provide counseling to help students solve problems.
- 3.2.4 Provide moral and civic education activities to instill moral values in students and heighten their social awareness.

- 3.2.5 Provide diversified curriculum and activities that facilitate the realization of individual potential in order to achieve a balanced development.
- 3.2.6 Encourage students to participate in diversified activities that could widen their horizons and broaden their experiences.
- 3.2.7 Provide peer counseling, allowing students from different year levels to share their learning experiences and achievements.
- 3.2.8 Strengthen the experience of team by providing activities that require team work from which students could learn interpersonal skills and understand the importance of cooperation.
- 3.2.9 Strengthen communication between the school and the community. Provide opportunities for student outreach and community services.

3.3 Resources and Facilities

- 3.3.1 Upgrade school resources and facilities to help teachers meet the varied needs of students and curriculum.
- 3.3.2 Provide school-based training and encourage teachers to take up further studies essential for their professional development.
- 3.3.3 Enhance teaching quality by making available more channels for sharing of good teaching practices.
- 3.3.4 Facilitate more programmes of exchange between teachers and students to enhance their team spirit and sense of belonging.

3.4 School Management

- 3.4.1 Provide more channels for communication and encourage the active exchange of opinions among teachers.
- 3.4.2 Provide clear guidelines on school administration and formulate procedures for implementing school administrative policies.

- 3.4.3 Increase transparency in the formulation of school policies. Provide opportunities for teacher participation in school administration.
- 3.4.4 Enable students to understand school administration and encourage them to raise their opinions.
- 3.4.5 Strengthen communication between alumni and the school and provide access for alumni involvement in school activities.
- 3.4.6 Strengthen communication between parents and the school and provide access for parent involvement in school activities.

4. Major Concerns 2017-2018

1. Enhancing Students' Learning Ownership
2. Enhancing Student Development through the Integration of Value Education and Life Planning
3. Enhancing Students' Digital Competence

5. Main Focuses of the Year:

Academic Committee

- ✧ Ensure students' engagement and responsibility in learning by incorporating 4Ps (Preparation, Participation, Presentation & Possession in learning and teaching)
- ✧ Embrace social skills through collaborative learning
- ✧ Equip students with life-long learning skills

Extra-curricular Activities Committee

- ✧ Clubs and Teams incorporate values in their activities.
- ✧ Cultivate commitment by encouraging students to devote in the activity.

Students Affairs Committee

- ✧ To refine the framework of holistic student development with the integration of value education.
- ✧ To strengthen the Career and Life Planning Education through the concerted efforts of teams and subject panels
- ✧ To strengthen class management in order to cultivate a class atmosphere and environment conducive for student development.

Professional Development Committee

- ✧ To enhance the capacity of subject heads
- ✧ To facilitate the implementation and evaluation of the 3-year Plan

Spiritual Life Development Committee

- ✧ To foster the five core values of Catholic education

General Affairs Committee

General Focuses:

- ✧ Continue to maintain the well-being of school facilities, and where appropriate, upgrade the facilities to meet the future needs.
- ✧ Explore different means to utilize the very limited space in the current campus.
- ✧ Provide necessary classroom facilities and an inviting environment to enhance classroom learning and teaching.
- ✧ Manage various facilities provided for student welfare, including those donated by PTA such as microwave oven.

Focuses in the next 3 years:

- ✧ Upgrade and replace teaching/learning facilities, including that of classrooms and special rooms especially laboratories to meet the needs evolved since the implementation of DSE.
- ✧ Assist the General Office to manage school facilities and take a more significant role in respective decision making, first by extending budget coverage to include many of the items currently managed by the General Office.
- ✧ Formulate procedure and work flow for routine tasks in the committee in the form of flowchart or word description whichever is more appropriate. Examples include S6 photo-taking, major-repair application preparation, movable-tower usage, handling student damage school property, etc ...

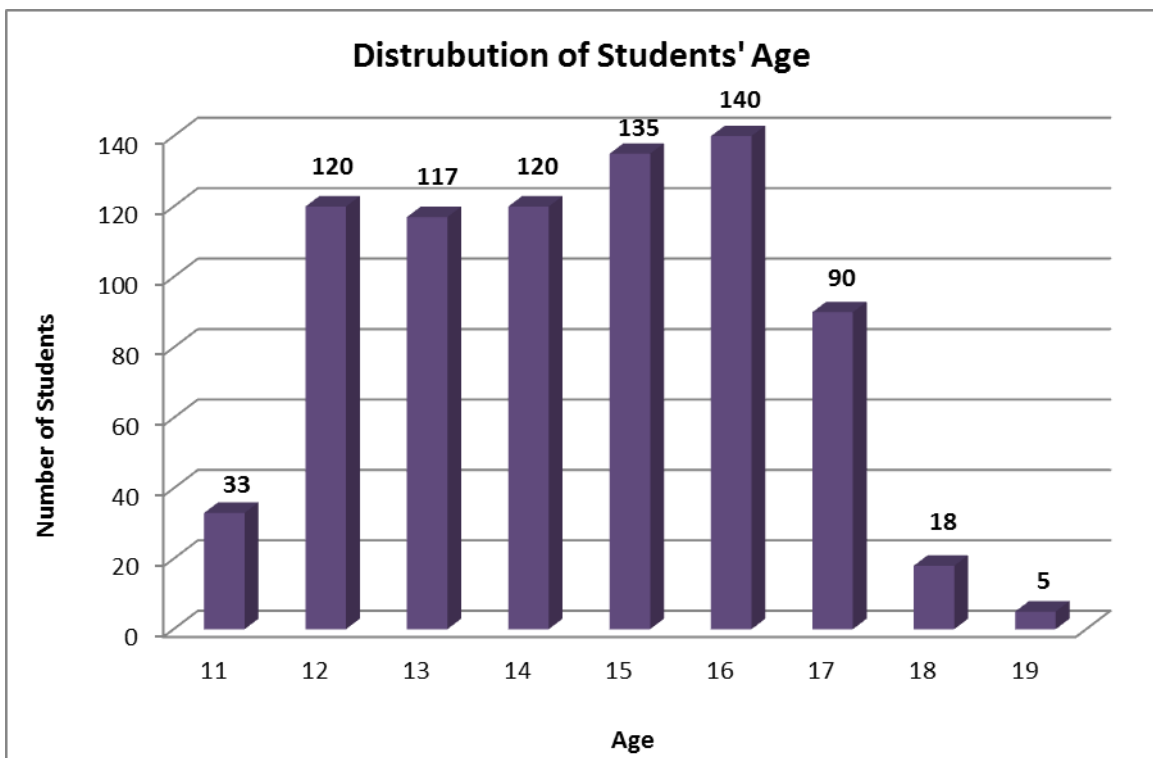
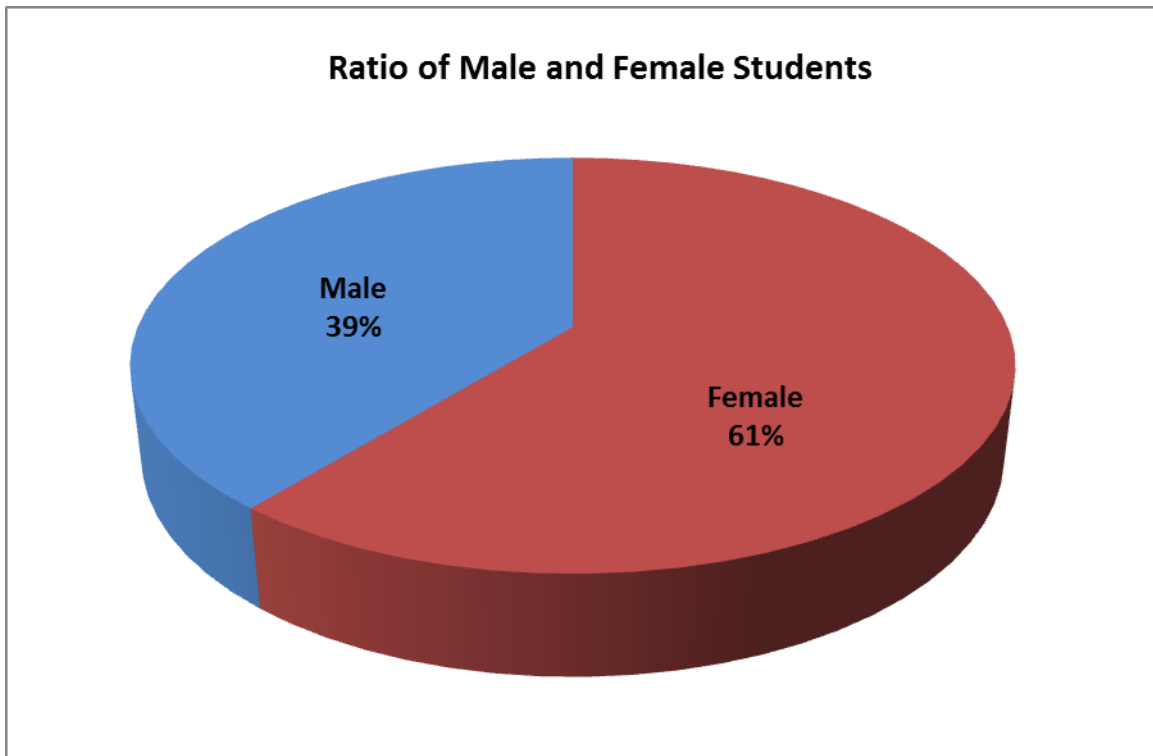
IT Committee

- ✧ Replace old and unstable facilities and relocate them appropriately to enhance accessibility of information technology for teaching and learning.
- ✧ Provide training and briefing sessions to teachers on e-learning.
- ✧ Provide support on STEM education in the school.
- ✧ Organize parent talks or workshops to enhance parents understanding of e-learning.

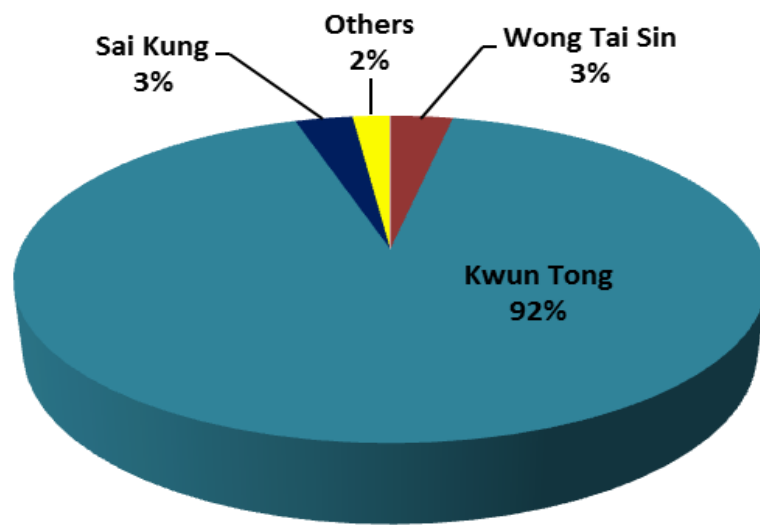
Major Projects:

1. Configuration of MDM for the new iPads.
2. Provide training to teachers on the use of MDM.
3. Setup “eClass Student App” for students
4. Renewal of MS ESS licensing scheme
 - Online 365 Pro Plus accounts will be provided to teachers and students
5. Work with PTA to organize talks or workshops for parents

6. Student Profile



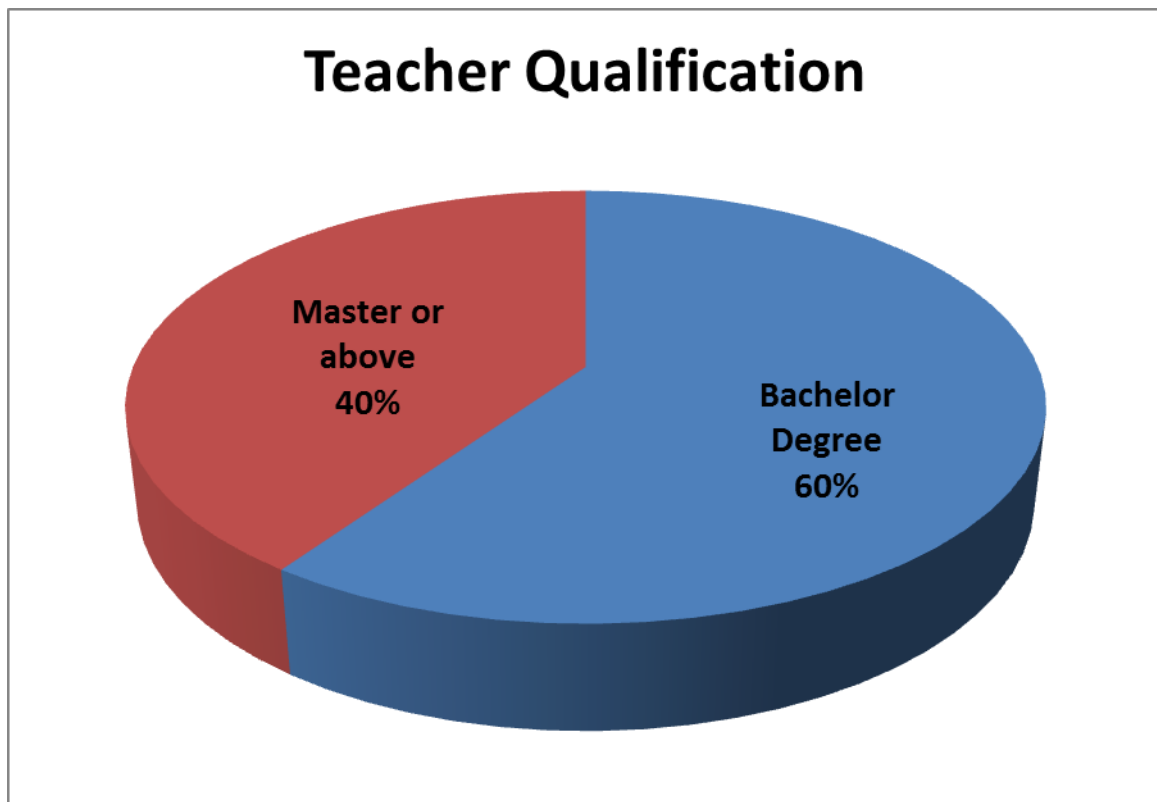
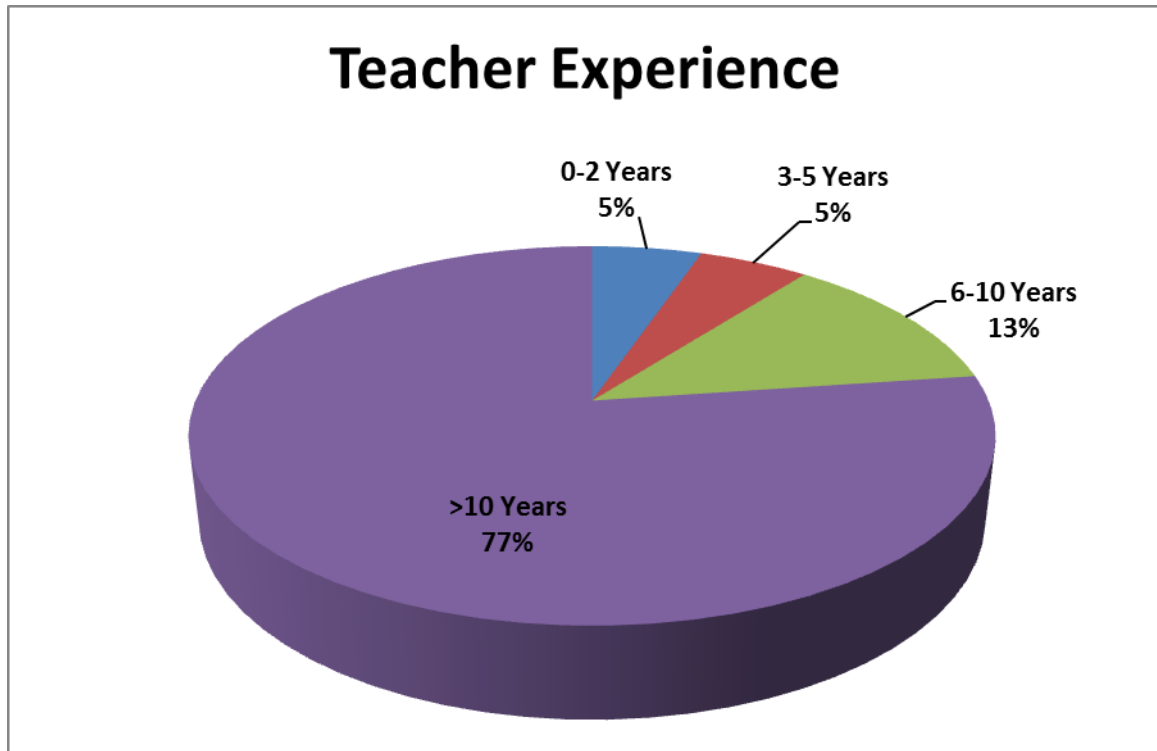
Distribution of Students' Places of Residence



7. Teacher Profile

Number of Teachers : 57

Teacher-student ratio : 1: 13.91



8. Class Structure

Levels	Sec. 1	Sec. 2	Sec. 3	Sec. 4	Sec. 5	Sec. 6	Total
Number of Classes	5	4	4	4	4	4	25

	No. of Classes	No. of places	No. of Students
Secondary 1	5	132	131
Secondary 2	4	128	128
Secondary 3	4	129	125
Secondary 4	4	131	126
Secondary 5	4	138	137
Secondary 6	4	136	131

9. Programme Structure

Subjects offered for each level

Subjects	Secondary	Secondary	Secondary	Secondary	Secondary	Secondary
	1	2	3	4	5	6
Chinese Language	❖	❖	❖	❖	❖	❖
English Language	❖	❖	❖	❖	❖	❖
English Debate			❖			
Putonghua	❖	❖	❖			
Mathematics	❖	❖	❖	❖	❖	❖
Science	❖	❖				
STEM		❖				
Economics				❖(E)	❖(E)	❖(E)
Geography				❖(E)	❖(E)	❖(E)
History				❖(E)	❖(E)	❖(E)
Chinese History	❖	❖	❖	❖(E)	❖(E)	❖(E)
Religious Education	❖	❖	❖			
Ethics & Religious Studies				❖(E)	❖(E)	❖(E)
Technology & Living	❖	❖	❖			
Visual Art	❖	❖	❖	❖(E)	❖(E)	❖(E)
Music	❖	❖	❖			
Physical Education	❖	❖	❖	❖	❖	❖
Physics			❖	❖(E)	❖(E)	❖(E)
Chemistry			❖	❖(E)	❖(E)	❖(E)
Biology			❖	❖(E)	❖(E)	❖(E)
Information & Communication Technology				❖(E)	❖(E)	❖(E)
Integrated Humanities	❖	❖	❖			
Extended Curriculum	❖	❖	❖			
Learning Skills Across Curriculum	❖		❖			
Business, Accounting & Financial Studies				❖(E)	❖(E)	❖(E)
OLE (Aesthetic Development)				❖	❖	❖
OLE (Religion, Moral & Civic Education and Service)				❖	❖	❖
Liberal Studies				❖	❖	❖
Reading to Learn	❖	❖	❖	❖	❖	❖
Life Education	❖	❖				
Mathematics Extension					❖	❖

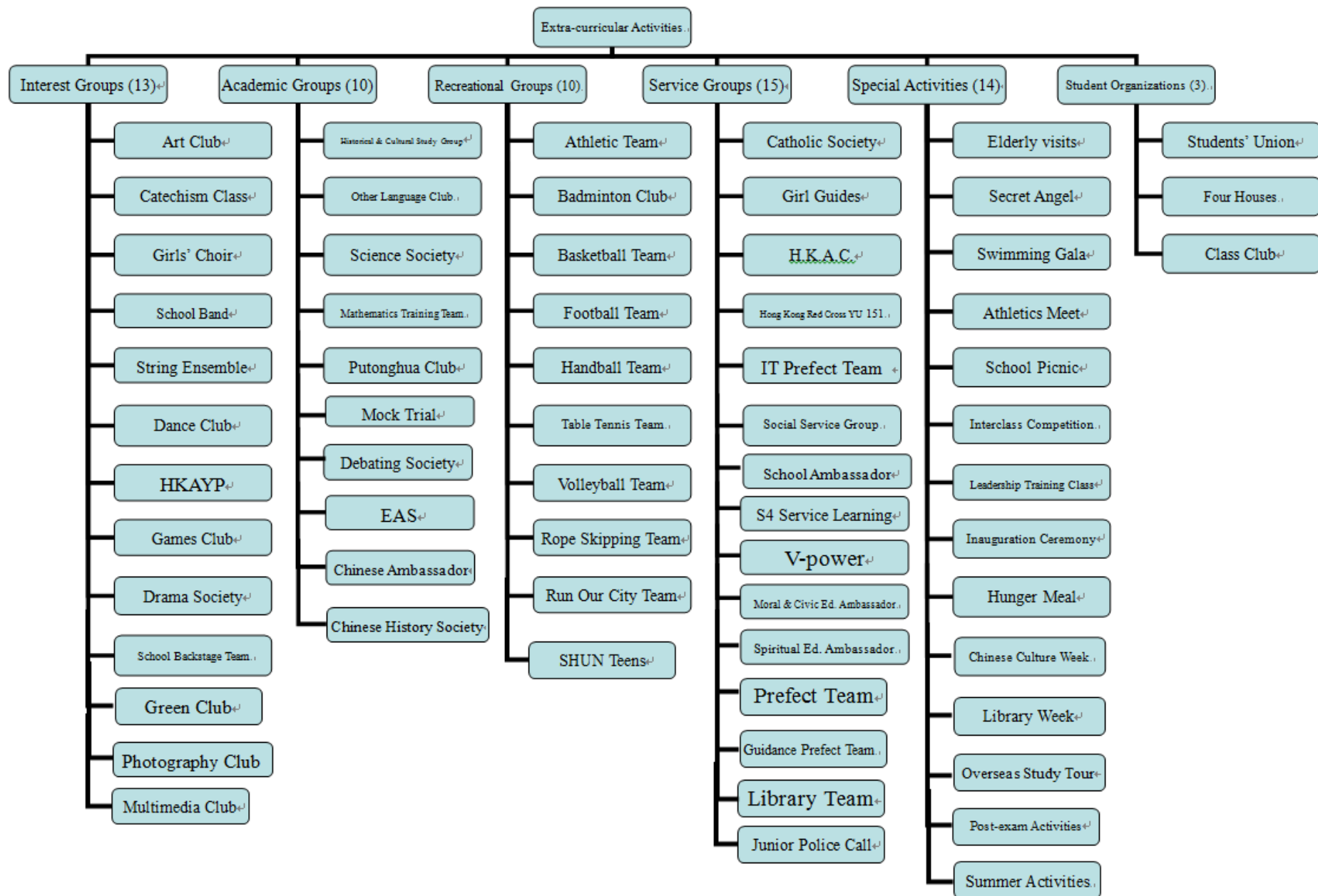
(E) - Elective Course

10. Programme Arrangement

Number of periods arranged for each subject in each level per cycle

Subjects	Secondary	Secondary	Secondary	Secondary	Secondary	Secondary
	1	2	3	4	5	6
Chinese Language	7	7	8	7/9	7/9	7/9
English Language	9	8	8	8/10	9/10	9/10
English Debate			2			
Putonghua	2	2	2			
Mathematics	6	6	6	7/9	7/9	7/9
Science	5	5				
STEM		2				
Economics				6	6	6
Geography				6	6	6
History				6	6	6
Chinese History	2	2	2	6	6	6
Religious Education	2	2	2			
Ethics & Religious Studies				6	6	6
Technology & Living	3	3	3			
Visual Arts	2	2	2	6	6	6
Music	1	2	1			
Physical Education	2	2	2	2	1	1
Physics			2	6	6	6
Chemistry			2	6	6	6
Biology			2	6	6	6
Information & Communication Technology				6	6	6
Integrated Humanities	4	4	4			
Extended Curriculum	2	2	2			
Learning Skills Across Curriculum	2		2			
Business, Accounting & Financial Studies				6	6	6
OLE (Aesthetic Development)				2	1	1
OLE (Religion, Moral & Civic Education and Service)				2	1	1
Liberal Studies				5	5	5
Reading to Learn	2	2	2	2	2	2

11. Extra-curricular Activity Structure



12. Our School Premises

All classrooms, special rooms and the school hall are equipped with a computer network and screen. Multimedia projectors, nano-PC are also installed in all venues.

Classrooms and Special Rooms

Student Activities Centre cum Student Union (SU) Office	Library cum Multi-media Resources Production Centre
Standard Classroom (25)	School Hall
Multi-media Geography Room (1)	Interview Room (2)
Computer Room (1)	Home Management Room
iSpace - <i>IT based classroom</i> (105)	Needlework Room
General Purpose Room (107)	Art & Design Room
Medical Inspection (MI) Room	Social Worker's Office
Covered Playground	Religious Education Room
Interactive Learning Centre (ILC)	Design & Technology Room
Science Laboratory	Chemistry Laboratory
Physics Laboratory	Biology Laboratory
Music Room	

Special Features

- iSpace - IT-based classroom where student collaborative learning is conducted in class, and student self-learning is allowed after school
- SL Discovery - Campus Video with plasma TV
- Most venues with IT facilities remain open for students and staff after school
- The Religious Education (RE) Room and a backyard with a statue of the Holy Mother provide a place of tranquility and spirituality in which students and staff can take a rest.